

DRAWING NUMBER  
**50/67**

DRAWING NUMBER

DRAWING NUMBER

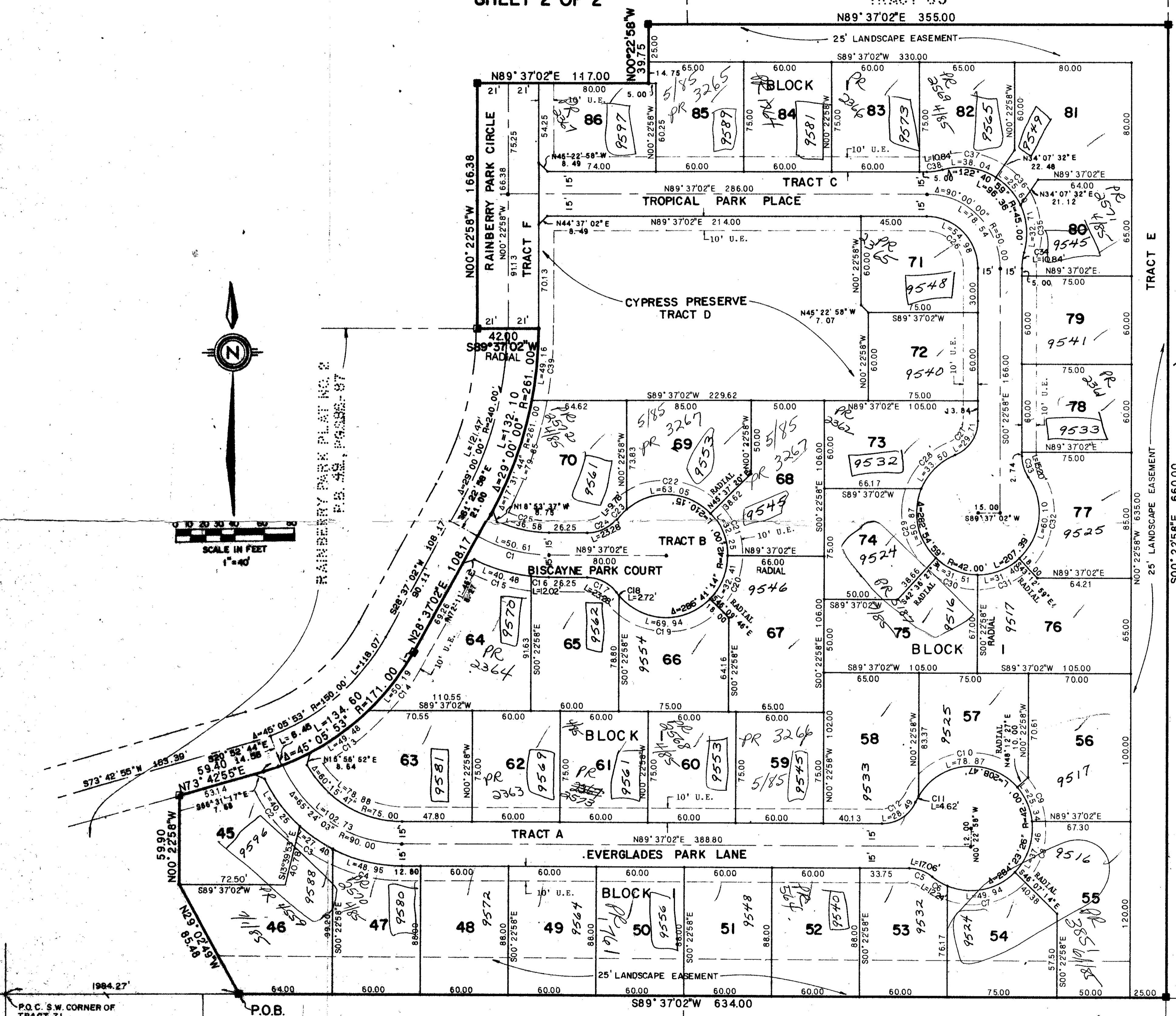
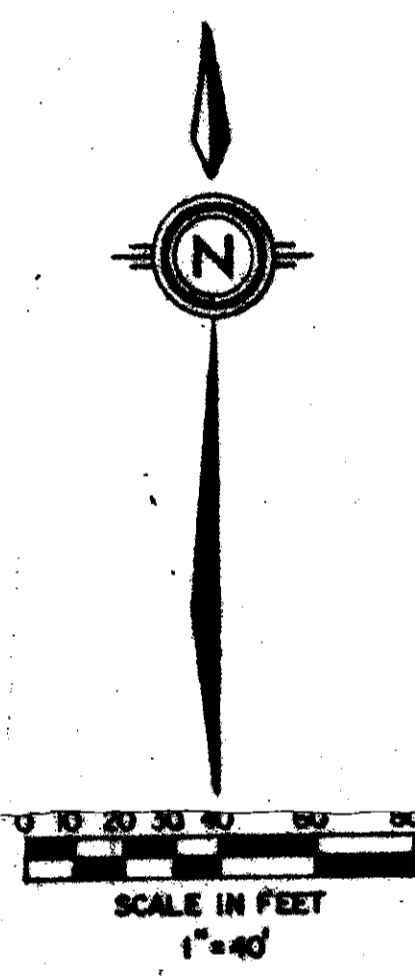
DRAWING NUMBER

# RAINBERRY PARK PLAT NO. 3

PART OF RAINBERRY OF WEST BOCA P.U.D.  
SITUATE IN SECTION 19, TOWNSHIP 47 SOUTH, RANGE 42 EAST, PALM BEACH COUNTY, FLORIDA, BEING A REPLAT OF A PORTION OF BLOCK 78, OF THE PALM BEACH FARMS COMPANY'S PLAT NO. 3 (PB 2, PG. 45-54).  
SHEET 2 OF 2

50/67

STATE OF FLORIDA  
COUNTY OF PALM BEACH  
THIS PLAT WAS FILED FOR RECORD AT \_\_\_\_\_ DAY OF \_\_\_\_\_ AD, 1984 AND DULY RECORDED IN PLAT BOOK \_\_\_\_\_ ON PAGES \_\_\_\_\_ AND \_\_\_\_\_  
JOHN B. DUNKLE, CLERK  
CIRCUIT COURT  
BY: \_\_\_\_\_, D.C.



NO.	DELTA	RADIUS	LENGTH
C1	29°00'00"	100.00	50.61
C2	21°57'43"	105.00	40.25
C3	14°57'07"	105.00	27.40
C4	26°42'38"	105.00	48.95
C5	39°05'38"	25.00	17.06
C6	16°42'02"	42.00	12.24
C7	68°07'49"	42.00	49.94
C8	51°05'58"	42.00	37.46
C9	34°34'21"	42.00	25.34
C10	107°35'16"	42.00	78.87
C11	6°18'00"	42.00	4.62
C12	65°17'50"	25.00	28.49
C13	16°34'47"	171.00	49.48
C14	16°49'06"	171.00	50.19
C15	20°10'05"	115.00	40.48
C16	5°59'23"	115.00	12.02
C17	53°20'37"	25.00	23.28
C18	3°42'40"	42.00	2.72
C19	95°24'45"	42.00	69.94
C20	44°13'12"	42.00	32.41
C21	43°59'42"	42.00	32.25
C22	86°00'37"	42.00	63.05
C23	13°20'18"	42.00	9.78
C24	53°20'37"	25.00	23.28
C25	24°39'28"	85.00	36.58
C26	90°00'00"	35.00	54.98
C27	68°08'27"	25.00	28.71
C28	45°45'64"	42.00	33.80
C29	69°24'08"	42.00	60.87
C30	42°59'28"	42.00	31.51
C31	42°50'08"	42.00	31.40
C32	81°59'31"	42.00	60.10
C33	34°49'32"	25.00	15.20
C34	16°20'29"	38.00	10.84
C35	41°39'14"	45.00	32.71
C36	32°35'27"	45.00	25.60
C37	48°26'18"	45.00	38.04
C38	16°20'29"	38.00	10.84
C39	10°47'31"	261.00	49.16

REPLAT OF BOCA LAGO  
(PB 31, PGS 66-71)

Handwritten notes and signatures, including 'RAINBERRY OF WEST BOCA' and 'P.O.D. 24'.

50/67 0372-300

Meridian WEST PALM BEACH, FLORIDA  
Surveying and mapping inc.

DRAWN	MEH	DATE	FEB 1984
CHECKED	RAH	SCALE	1" = 40'
DRAWING NO.	85-P-048		

RAINBERRY PARK PLAT NO. 3

BLOCK 78  
PALM BEACH FARMS COMPANY'S PLAT NO. 3  
PB 2, PGS 45-54